



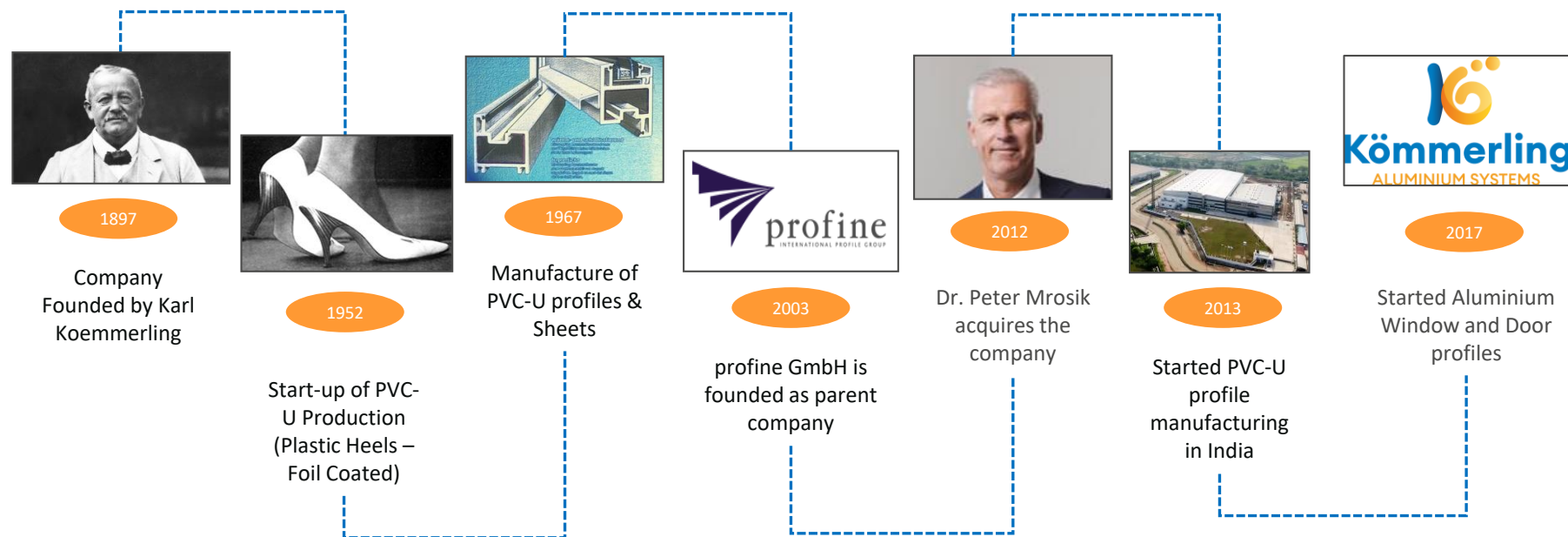
**Kömmerling®**  
Aluminium Systems

KOEMMERLING ALUMINIUM SYSTEMS

# KOEMMERLING. TODAY FOR TOMORROW.

World Leader in Premium Windows

## 125 YEARS OF KOEMMERLING – UNDERSTANDING OF PAST SHAPING OUR FUTURE



# KOEMMERLING ALUMINIUM SYSTEMS

Your Strong Partner in Aluminium  
Window and Door systems

› Advanced German Engineering

› Vast product range for every application

› Highest level of product & service quality

› Fast delivery



## OVERVIEW. PROFINE. FACTS

BRANDS	KBE, KÖMMERLING, TROCAL, ALUPURE
PRODUCTS	Profile systems for windows, doors, facades, shutter systems and sheets
EMPLOYEES WORLDWIDE	Over 3000
GROUP TURNOVER	Over 900 mil. Euros (consolidated)
MARKETS	Supply to more than 100 countries
LOCATIONS	29 in 23 countries - headquarters in Troisdorf
MARKET SHARE	21% (Germany)
PRODUCTION CAPACITY	Approx. 450,000 ton / year

# KOEMMERLING ALUMINIUM ADVANTAGES

› Unmatched Quality

› Perfect fit for modern architecture

› Extraorindary sizes with various glass thickness

› Highly durable and maintenance free

› Colourfast thanks to powder coating or eloxal coating



# CASEMENT

Window and Door Systems



# CASEMENT WINDOW APC 46 SYSTEM

KOEMMERLING APC 46 IS A CENTRE SEAL CASEMENT WINDOW SYSTEM

- › Inward / outward opening
- › Maximum sash panel size 0.75m (w) x 1.5m (h)
- › Wind load capacity upto 2 KPA
- › Elegant, modern window geometry with convex design sash
- › Range includes single panel opening window, double panel openable window, Tilt & Turn, French window, top hung and fix windows
- › The APC 46 system can accommodate glass thickness from 5-24 mm
- › Easy care, durable, and robust
- › Lasting value thanks to durable quality of the highest level
- › Single and Multiple locking to ensure higher security



Outward Opening



Inward Opening

# CASEMENT DOOR

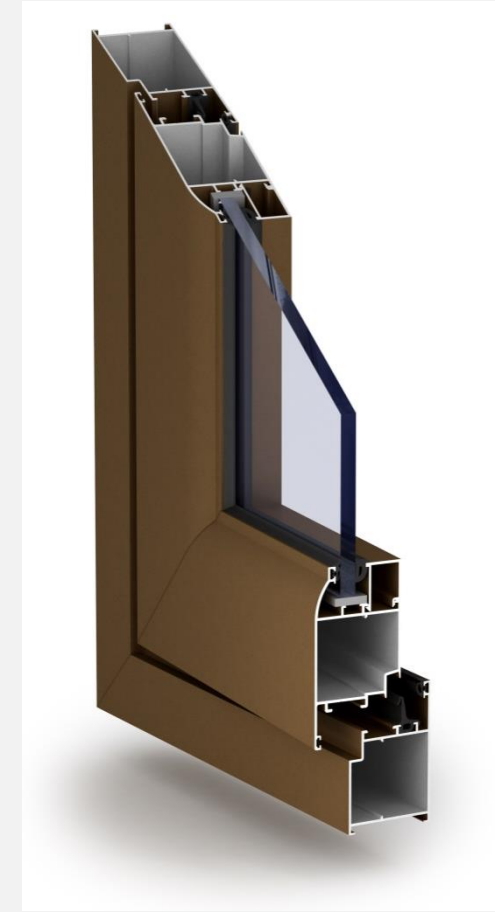
## APC 46 SYSTEM

KOEMMERLING APC 46 IS A CENTRE SEAL CASEMENT DOOR SYSTEM

- › Inward / outward opening
- › Maximum sash panel size 1.0m (w) x 2.4m (h)
- › Wind load capacity upto 2 KPA
- › Elegant, modern residential door geometry with convex residential door design sas
- › Extra wide base profile
- › The system can accommodate glass thickness from 5-24 mm
- › Low threshold door solution minimize the bottom frame
- › Single and Multiple locking to ensure higher security



Outward Opening



Inward Opening



# SLIDING

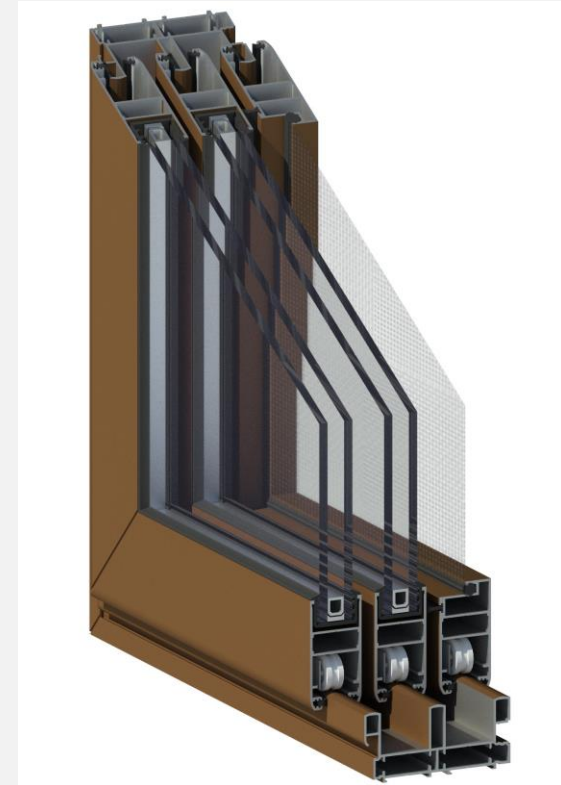
Window and Door Systems



# SLIDING WINDOW & DOOR APSL 31 SYSTEM

KOEMMERLING APSL 31 IS A MODULAR FRAME SYSTEM

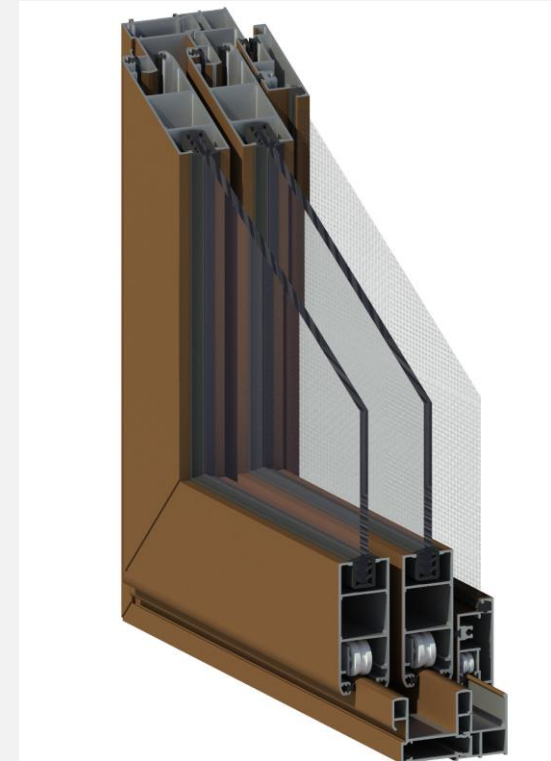
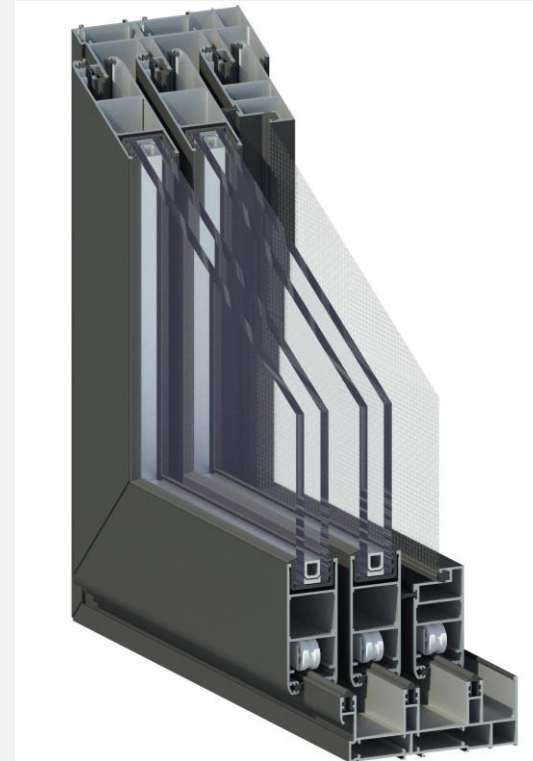
- › Sliding system offers two track, three track with and without fly mesh track
- › Can be produced in two, three, four and six panels
- › Maximum panel size 1.0m (w) x 1.8m (h)
- › Wind load capacity upto 2 KPA
- › Add on frame system for multi-sash installations
- › Flyscreen sash can also be used as a mullion
- › Can accommodate glass thickness from 5-22 mm
- › Single and Multiple locking to ensure higher security



# SLIDING WINDOW & DOOR APSL 31 PLUS SYSTEM

KOEMMERLING APSL 31 PLUS IS A GUIDE RAIL MODULAR  
FRAME SYSTEM

- › Can be produced in two, three or four parts
- › Maximum panel size 1.2m (w) x 2.4m (h)
- › Wind load capacity upto 2 KPA
- › Add on frame system for multi-sash installations
- › Option for flyscreen
- › Can accommodate glass thickness from 5-22 mm
- › Single and Multiple locking to ensure higher security





**Kömmerling®**  
Aluminium Systems

# OPULENZ

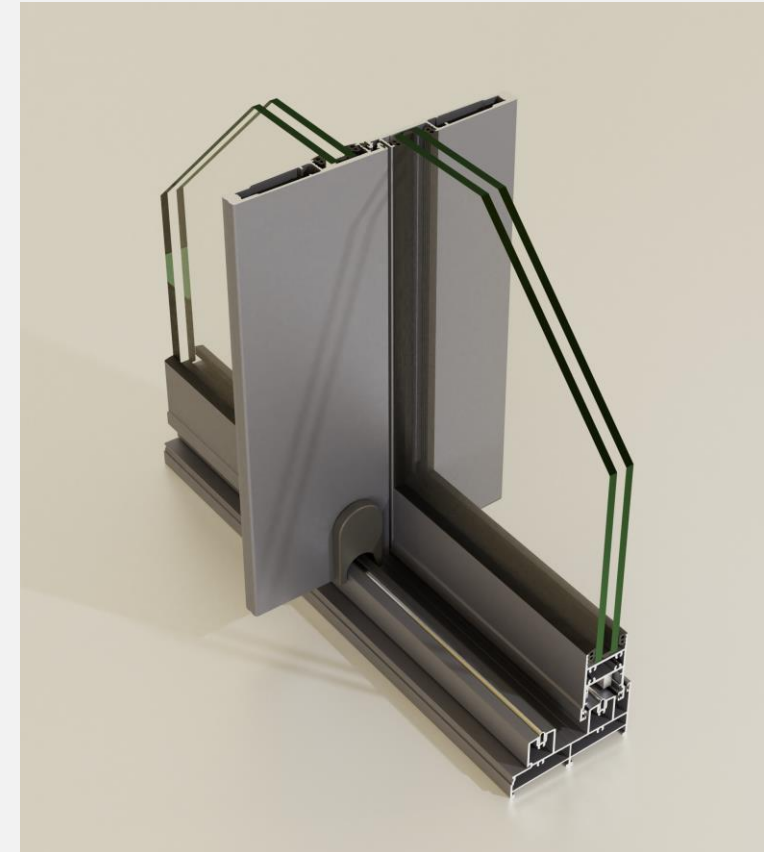
Premium Slim Interlock Sliding Door System



# OPULENZ PREMIUM SLIDING DOOR

## PREMIUM SLIM INTERLOCK SLIDING DOOR SYSTEM

- › Maximum panel size 2m (w) x 4m (h)
- › Can be produced upto 6 panels
- › Robust highly stable can bear wind load upto 3 KPA
- › Specially designed rollers can bear the load of upto 400 kg per panel
- › Glass thickness SG and DGU from 8 - 36 mm
- › Interlock width, from 22-25 mm
- › Corner opening is also available
- › Multiple locking to ensure higher security



# MAJESTIC

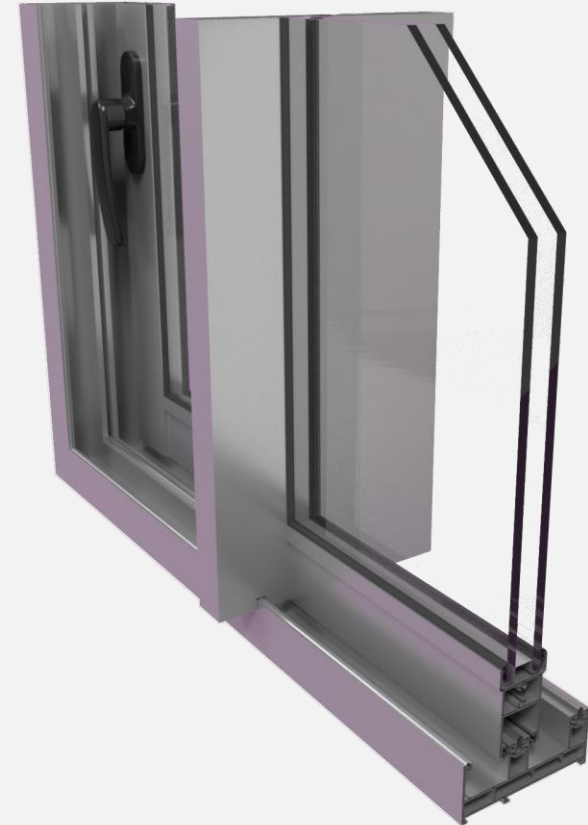
Sleek Interlock Sliding Door System



# MAJESTIC SLIDING DOOR

## SLEEK INTERLOCK SLIDING DOOR SYSTEM

- › Maximum shutter size 1.5 x 3 mtr
- › Can be produced upto 6 panels
- › Wind load capacity upto 2.5 KPA
- › Sightline or face width is 33 mm
- › Rollers can bear the load upto 300 kg per panel
- › Glass thickness SG and DGU from 5-32 mm
- › 2 track 3 track frame with SS guide rail and inside lip with flymesh option
- › Multiple locking to ensure higher security





**Kömmerling®**  
Aluminium Systems

# SLIDING FOLDING

Door System

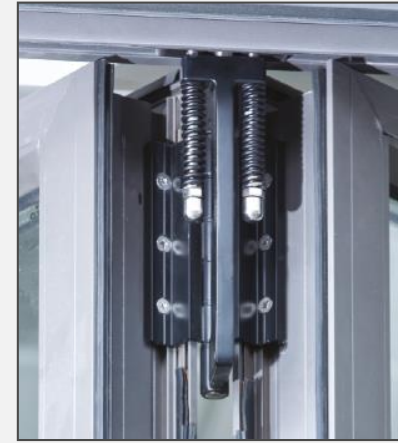




# SLIDING FOLDING

## FRAME / LOW THRESHOLD PROFILE SYSTEM

- › Can be produced in two, three or four parts
- › Can be produced upto 11 panels
- › Wind load capacity upto 1.2 KPA
- › 70 mm Frame Depth (Slim Profiles for large glass area)
- › Heavy duty sliding folding door (in or out opening) suitable for use in commercial application where heavy usage is expected
- › Four stainless steel wheels in bottom & four on top ensures larger door size smooth and consistent operation
- › System accommodate glass thickness from 8 to 35mm
- › Three point hook locking
- › Anti-finger trapping gasket
- › Low threshold option to minimize the bottom frame for barrier free access



# GRANDE

Premium Casement Door System



# GRANDE

## PREMIUM CASEMENT DOOR SYSTEM

- › Maximum panel size 1.4m (w) x 3m (h)
- › Wind load capacity upto 2.5 KPA
- › Glass thickness SG and DGU from 5-34 mm
- › Inside & outside open sash option
- › Single openable, French openable, fix and openable doors
- › Bottom frame/Low threshold profile
- › Single and Multiple locking to ensure higher security



# ATMOSPHERE. EMOTIONS. HARMONY

- › Koemmerling Aluminium system provides the maximum leeway for colours.
- › Powder finishing from RAL palette with unlimited colour options in glossy, mat and textured
- › Anodic finishing for a brilliant look.
- › Powder or anodic coatings provide protection against environmental effects.



# QUALITY STANDARDS

Koemmerling Aluminium Systems	Tests	Standards	Results
APC-46 mm Casement System (Windows & Doors)	Air Infiltration	BS EN12207:2000	Class 3
	Static Water Penetration	BP EN12208:2000	Class 7A
	Structural Performance	BS EN12210:2000	Class B5
APSL-31 mm Sliding Systems (Windows & Doors)	Air Infiltration	BS EN12207:2000	Class 3
	Static Water Penetration	BP EN12208:2000	Class 7A
	Structural Performance	BS EN12210:2000	Class B5
Opulenz – Premium Sliding Door System	Air Infiltration	BS EN12207:2016	Class3/4
	Static Water Penetration	BP EN12208:2000	Class 6/7A
	Wind Resistance	BS EN12210:2016	Class BE 3000
Majestic – Sleek Interlock Sliding Door System	Air Infiltration	BS EN12207:2016	Class 3A
	Static Water Penetration	BP EN12208:2000	Class 7A
	Wind Resistance	BS EN12210:2016	Class BE 2500
Grande – Premium Casement Door System	Air Infiltration	BS EN12207:2016	Class 3A
	Static Water Penetration	BP EN12208:2000	Class 7A

# PROJECTS

Casement and Sliding Systems









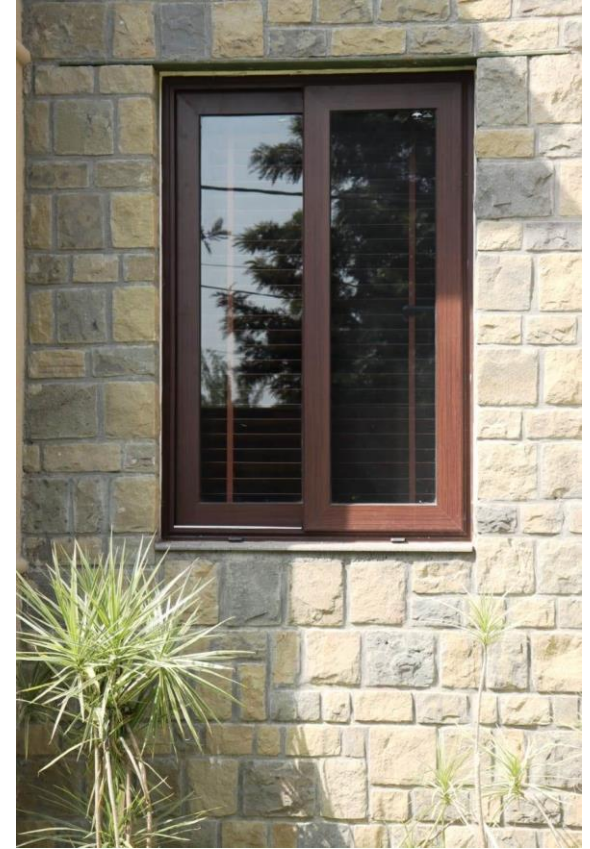












THANK YOU

